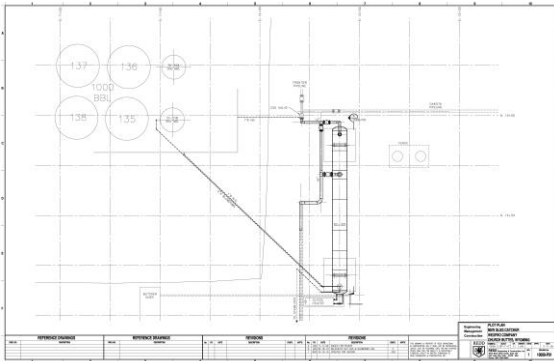


500 BARREL SLUG CATCHER



CLIENT

Wexpro Company

PROJECT DESCRIPTION

This project consisted of the engineering, design and construction management of a new 500 barrel slug catcher and associated piping at the Church Buttes gas plant.

PROJECT FEATURES

- Slug Catcher dimensions- 85' L x 7'Ø
- 12" Inlet Piping; 16" Outlet Piping
- Automated level control for "dumping" condensate
- 350,000 BTU heating system for freeze protection
- Working within an active gas plant, adhering to procedures and applying safe-work practices was critical



REDD Engineering & Construction, Inc.
Salt Lake City, Utah USA
(801) 582-4900
www.redd-team.com